

RECYCLING ETC.

Solid Waste Agency of Northern Cook County

SPRING 2012

Live a Greener Life with SWANCC

Say Goodbye to Lawn Chemicals

As the weather becomes nicer and children begin playing outdoors or friends enjoy a cookout, make sure that your lawn is ready. Whether you hire a service or do your own yard care, there are alternative methods to attain green grass, beautiful flowers and successful gardens.

Check out SWANCC's new resource, "Eco-Landscaping Guide", that highlights alternatives to chemicals for managing outdoor spaces to achieve healthier soils, which in return yield healthier fruits and vegetables and protects people, the environment and its ecosystem. The guide also includes information on composting, pest control, water conservation and additional resources.

Many of the chemicals used to fight weeds and pests have come under fire. Research indicates some chemicals can be harmful to our health when not used as directed by causing rashes, blurriness of vision, thyroid issues and even some types of cancer. Be informed and know that there are alternative options at safelawns.org.

Composting Demonstration Site

SWANCC has created a composting demonstration system at its Glenview Transfer Station in collaboration with University of Illinois Extension Service Master Composter and Arlington Heights

resident, Diane Bolash. Classes will be scheduled for residents to learn how to mix yard waste such as leaves, grass and small twigs with acceptable food waste to make a nutrient-rich soil amendment for their lawns and gardens. The first workshop is scheduled for Saturday, May 19, 2012, from 1:00 - 1:45 pm and 2:15 - 3:00 pm, weather permitting. There is no cost to attend a workshop, but class size is limited and registration will be accepted on a first-come, first-served basis. For registration or for more information, contact SWANCC at info@swancc.org or (847) 724-9205, ext. 9.

Informational Videos

SWANCC has developed three videos to assist residents with disposing of household materials that should not be thrown away or put in curbside recycling. The theme of each video is based on questions most frequently asked by residents. The videos are posted at swancc.org. Also, a DVD is available for loan by emailing info@swancc.org.

- Recycling 101: The Do's and Don'ts
- Programs for Special Material
- How to Dispose of Paint and Household Chemicals

Find the above information and many additional recycling and waste reduction resources at swancc.org.

what's inside

| | |
|-----------------------------|------|
| Electronics Recycling | pg 2 |
| Pharmaceutical Disposal | pg 3 |
| Document Destruction Events | pg 3 |
| CFL Bulb Recycling Program | pg 4 |
| Household Chemical Waste | pg 4 |
| Battery Recycling | pg 5 |
| Mercury Thermometers | pg 5 |
| April Calendar | pg 6 |
| Recycling 101 | pg 7 |

Member Communities

- Arlington Heights
- Mount Prospect
- Barrington
- Niles
- Buffalo Grove
- Palatine
- Elk Grove Village
- Park Ridge
- Evanston
- Prospect Heights
- Glencoe
- Rolling Meadows
- Glenview
- Skokie
- Hoffman Estates
- South Barrington
- Inverness
- Wheeling
- Kenilworth
- Wilmette
- Lincolnwood
- Winnetka
- Morton Grove

swancc.org

About SWANCC

SWANCC, a nonprofit intergovernmental agency, has provided solid waste management services, programs and resource materials to its 23 member communities since 1988. SWANCC's focus is to reduce the volume and toxicity of solid waste through responsible waste reduction solutions (reduce-reuse-recycle-rebuy) and includes collections for special materials such as electronics, prescription drugs and sharps, compact fluorescent light (CFL) bulbs, mercury thermometers, holiday lights and batteries. Only residents who live in a SWANCC member community are eligible to participate in the Agency's programs.

COMPUTER & ELECTRONICS RECYCLING

SWANCC Provides Three Ways to Recycle Electronics

Computer and Electronics Recycling for SWANCC-Area Residents Only



Since 1999, SWANCC has provided environmentally-responsible recycling for computers and electronics.

As of January 1, 2012, under the *Illinois Product Recycling and Reuse Act* (P.A. 97-0287), the following electronic items are prohibited from being thrown away in the garbage:

- Cable Receivers
- Computers (including tablets)
- Digital Converter Boxes
- Digital Video Disc Players
- Digital Video Disc Recorders
- Electronic Mice
- Electronics Keyboards
- Facsimile Machines
- Monitors
- Portable Digital Music Players
- Printers
- Satellite Receivers
- Scanners
- Small Scale Servers
- Televisions
- Video Game Consoles
- Videocassette Recorders

SWANCC offers three options to recycle these items. Additionally, cell phones will also be accepted for recycling. For additional information about this new law, please visit the Illinois Environmental Protection Agency's (IEPA) website at epa.state.il.us.

For a list of recycling options for items not taken in the electronics recycling program such as microwaves, home appliances, shredders, dehumidifiers, humidifiers and air conditioners, visit SWANCC's *Green Pages* directory at swancc.org.

1. Permanent Drop-Off Locations

The following communities will host permanent electronics locations for residents who live in any SWANCC member community (please note that locations will be closed on holidays):

SWANCC's Glenview Transfer Station
1151 N River Road
Across from the Maryville Academy
Saturdays: 9:00 am - 11:30 am

Winnetka Public Works Facility
1390 Willow Road
Tuesdays: 10:00 am - 12:00 pm
Thursdays: 1:00 pm - 3:00 pm

Hoffman Estates Village Hall
1900 Hassell Road
Mondays: 10:00 am - 12:00 pm
April - November Only

Mount Prospect Public Works Facility
1700 W Central Road
Wednesdays: 10:00 am - 12:00 pm
April - October Only

2. One-Day Events

The following community one-day events are for residentially-generated electronics. Visit swancc.org for details. ***Combined with a Document Destruction Event.**

Sunday, April 29, 2012
Skokie - Niles North High School
9800 N Lawler Avenue

Saturday, May 19, 2012
Wheeling Public Works Facility
77 W Hintz Drive

*Saturday, June 30, 2012**
Niles Public Services Center
6849 Touhy Avenue

*Saturday, July 14, 2012**
Evanston Township High School
1600 Dodge Avenue

*Saturday, July 28, 2012**

Glencoe SE Commuter Parking Lot
Park Avenue and Green Bay Road

*Saturday, August 11, 2012**
Hoffman Estates Public Works
2305 Pembroke Avenue

*Saturday, August 18, 2012**
Glenview Public Works Facility
1333 Shermer Road

*Saturday, September 15, 2012**
Buffalo Grove
151 Hastings Lane (behind Banner Plumbing)

*Saturday, October 6, 2012**
Rolling Meadows Public Works Facility
3900 Berdnick Street

*Saturday, October 20, 2012**
Barrington North Commuter Parking Lot
Main and Wool Streets

Do not drop off electronics other than during posted dates and times. Thank you for your cooperation.

3. At Home Pickup Program

Residents who live in a single family home with street level access to a front door can have their electronics picked up from their front steps rather than drive to a drop-off location or wait in line at an event. To make arrangements, log on to swancc.org or call (847) 724-9205, ext. 9. A charge of \$30 via credit card offsets program costs of up to 6 items according to the "Acceptable Materials" outlined to the left. Additional items may be added for \$5 each. No single item may exceed 50 pounds and televisions are limited to 27 inches.

Items must be placed on the front porch by 7:30 am. No pickups are allowed for schools, businesses or institutions. **The pickup program runs from May through September only.**

Do not bring household hazardous waste or other unlisted items. Do not drop off electronics other than during the posted dates and times. Thank you for your cooperation!

RECYCLING 101

PAPER

- Advertising/Junk Mail
- Aseptic Packaging
 - Milk, Juice, Soup Cartons
- Corrugated Cardboard
- Kraft Brown Paper Bags
- Magazines/Catalogs
 - Glossy, Non-glossy
- Newspaper (with inserts)
- Office/School Paper
- Paperboard/Chipboard
 - Cereal Boxes
 - Pasta Boxes
 - Clothing Boxes
 - Tissue Boxes
- Telephone Directories



PLASTIC

All plastic containers and bottles with these symbols.



PETE



HDPE



PVC



LDPE



PP



Other

EXAMPLES INCLUDE:

- Plastic beverage and food bottles or containers
- Milk, water and juice bottles, yogurt cups, vegetable oil
- Liquid detergent, fabric softener, bleach, shampoo

METAL

- Aluminum cans
- Steel or tin cans

GLASS

- Bottles and jars only
- Brown, green and clear glass

RECYCLING PREPARATION

- All materials may be mixed together.
- Rinse all recyclables free of food residue
- Leave lids on containers.
- Flatten all corrugated cardboard and paperboard boxes.
- Remove any non-paper packing material.

What About Plastic #6?
Many recycling programs on a national level no longer include #6 PS plastic, known as polystyrene (check with your local hauler). It comes in expanded (fluffy) and rigid (clear) forms.

According to industry experts, #6 PS plastic is not easily recycled because it is mostly air, often coated with food contaminants, and can cost more than other commodities to recycle due to its lightweight nature, lack of

competitive markets and high transportation costs.

However, *Abt Electronics*, 1200 N Milwaukee Ave., in Glenview and *Dart Container Corp.*, 315 Evergreen Dr., in Aurora take polystyrene from

homeowners. Both companies offer drop-off programs for plastic foam packaging and washed out food service items. Visit Abt at abt.com/green/ and Dart Container Corp., Inc. at dartcontainer.com for details.



Please be sure to verify this information with your hauler.
Information on special recycling collection events can be found at swancc.org.

PRESCRIPTION DRUGS & SHARPS DISPOSAL

Dispose of Your Prescription Drugs and Sharps Properly

Prescription Drug and Sharps Disposal for SWANCC-Area Residents Only

SWANCC sponsors a collection and disposal program for expired or unused medications and sharps, and provides a 1-quart collection container for needles. Recent research by the U.S. Environmental Protection Agency and the U.S. Geological Survey revealed that there are substantial amounts of antibiotics and steroidal hormones in rivers, lakes and wells caused by people flushing their medications down the toilet or putting them down the sink.

Additionally, sharps can cause needle-sticks and health issues if thrown away in the garbage or put in the water system.



Pharmaceutical Tips:

- Prescription drugs more than a year old should be disposed of properly.
- Turn in non-prescription medicines without an expiration date that are more than six months old.
- Keep pharmaceuticals in original container with labels for identification.
- Cross out your name and other personal information.
- Sharps are to be placed in a SWANCC-provided container, which can be picked up and returned to participating locations (see swancc.org).
- No controlled substances can be accepted at this time. If in question, contact your local pharmacist or view the U.S. Drug Enforcement Agency's list at swancc.org. You can crush the pills and mix with an undesirable substance like coffee grounds or kitty litter, and discard in the garbage.

Many of SWANCC's member communities provide a drop-off location for medications and sharps disposal. For more information, visit swancc.org.

No commercial or institutional waste will be accepted. Companies can find medical waste disposal information at swancc.org.

National Prescription Drug Take Back Day on April 28, 2012

The U. S. Department of Drug Enforcement Administration (DEA) is sponsoring a collection program for prescription medications to **include Controlled Substances**. This program will not include sharps.

Saturday, April 28, 2012

10 am to 2 pm

For information about this program, please visit deadiversion.usdoj.gov.

DOCUMENT DESTRUCTION

SWANCC To Provide Document Destruction Events

Paper Shredding Available for SWANCC-Area Residents Only

As a courtesy to residents who have sensitive documents to shred, such as medical records, tax forms, bank statements, etc., the Agency continues to provide seasonal Document Destruction Events.

SWANCC residents can bring up to six grocery-size bags or boxes of paper documents – dates and communities are provided to the left. Visit swancc.org for times and locations.

Workers at the events will remove the paper documents from your vehicle and put them into a toter cart which is fed directly into the onsite truck for immediate cross-shredding.

The contractor will transport the shredded paper back to its facility to bale and market for recycling.

Document Destruction Tips:

- Remove large metal clips and binders
- Put paper documents in a bag or box
- Staples and paper clips are acceptable and are sorted out later in the process
- Residents are limited to six grocery-size bags or boxes of paper
- No businesses will be allowed



May 19 Winnetka

June 9 Elk Grove Village

June 30 Niles*

July 14 Evanston*

July 28 Glencoe*

August 4 Lincolnwood

August 11 Hoffman Estates*

August 18 Glenview*

August 25 Mount Prospect

September 8 Morton Grove

September 15 Buffalo Grove*

September 22 Arlington Heights

September 29 Wheeling

October 6 Rolling Meadows*

October 20 Barrington*

* Combined with electronics recycling

CFL LIGHT BULB RECYCLING

SWANCC Offers Recycling Program for Compact Fluorescent Light Bulbs (CFLs)

Fluorescent Bulb Recycling for SWANCC-Area Residents Only



Compact Fluorescent Light Bulbs, known as CFLs, are quickly replacing incandescent bulbs due to their energy-efficiency and cool-to-the-touch qualities. The Environmental Protection Agency (EPA) endorses these eco-friendly bulbs, but residents need to know that approximately 3 to 4 milligrams of mercury are contained in the glass tubing of each CFL and in excess of 4 milligrams in a 4 foot fluorescent light bulb. As with any household items that contain hazardous material, they should be properly handled

at the end of their lives, which is why SWANCC continues to support its CFL Recycling Program. Even though residents may dispose of a CFL in the garbage, it is best to take it to a community drop-off to be recycled to protect human health and avoid unsafe releases to the environment.

The following household tips are provided by the EPA and can be found online by visiting epa.gov/cflcleanup.

Tips to Remove and Replace a CFL

- Turn light switch off before removing the bulb.
- Unscrew the bulb by holding the plastic or ceramic base, not the glass tubing.
- Do not over-tighten bulb when replacing.
- Never forcefully twist the glass tubing.
- Consider placing a towel underneath area where CFL is being changed.
- Do not use CFLs in locations where lamps can be knocked over.

Tips to Clean Up a Broken CFL

- If possible, open a window in the room for ventilation.
- Sweep up the broken glass fragments and fine particles with a piece of cardboard and a damp paper towel.
- Contain broken glass, cardboard and paper towel in a zip lock bag, then place in a brown bag clearly marked "broken glass".
- Place the double bags with above contents in the outside garbage can – do not sweep up or vacuum debris or put it in an inside garbage compactor.

Select locations are accepting 4 foot fluorescent lights from SWANCC residents for recycling. IDs will be checked for proof of residency in any SWANCC member community.

Visit swancc.org for participating communities and their drop-off details.

HOUSEHOLD CHEMICAL WASTE

Permanent Drop-Off Locations

The Illinois Environmental Protection Agency (IEPA) hosts permanent facilities for Household Chemical Waste (HCW). Visit epa.state.il.us for details.



Chicago

1150 N North Branch Street
Tues: 7:00 am - 12:00 pm
Thur: 2:00 pm - 7:00 pm
1st Sat/mo: 8:00 am - 3:00 pm
cityofchicago.org/environment

Naperville

Fire Station #4
1971 Brookdale Road
(630) 420-4190
Sat: 9:00 am - 2:00 pm
Sun: 9:00 am - 2:00 pm

Gurnee

1311 N Estes Street
(847) 336-9340
swalco.org
By appointment only

Rockford

Rock River Reclamation Dist.
3333 Kishwaukee Street
(815) 387-7400
Sat: 8:00 am - 4:00 pm
Sun: 12:00 pm - 4:00 pm

Acceptable Items at HCW Drop-off Locations

- Aerosol Paint
- Antifreeze
- Cleaning Products
- Drain Cleaners
- Fluorescent Light Bulbs
- Herbicides
- Hobby Chemicals
- Insecticides
- Lawn Chemicals
- Mercury
- Old Gasoline
- Oil-based Paint
- Paint Thinners
- Pesticides
- Pool Chemicals
- Solvents
- Used Motor Oil

Unacceptable HCW

- Agricultural Chemicals
- Business/Commercial Waste
- Explosives
- Farm Machinery Oil
- Fire Extinguishers*
- Fireworks
- Institutional Waste
- Latex Paint
- Lead Acid Batteries*
- Propane Tanks*
- Smoke Detectors

*The Chicago location also accepts these materials.

For more information, visit swancc.org.

HOUSEHOLDBATTERIES

SWANCC Provides Recycling Program For Alkaline and Rechargeable Batteries

Battery Recycling for SWANCC-Area Residents Only

In February 2011, SWANCC rolled out a new program to collect spent household batteries. Common alkaline batteries are no longer accepted at IEPA-sponsored Household Chemical Waste events due to their benign nature and the associated high recycling costs.

Rechargeable batteries contain heavy metals which pose a threat to our environment and have a marketable recyclability.



Interstate Batteries in Skokie is providing a product stewardship initiative to recycle the following batteries from SWANCC residents at participating community drop-offs. IDs will be checked for proof of residency in any SWANCC member community. For details, visit swancc.org:

- Household Alkaline Batteries - AA, AAA, C, D and 9V, button cell
- Rechargeable Batteries - NiCad, NiMh, lithium ion, lithium polymer

Prior to dropping off batteries, residents must cover the contact points of each rechargeable battery (Lithium, NiMh and NiCad) with masking tape or place each rechargeable battery in an individual self-locking plastic bag so that the contact points on batteries do not touch each other during collection or transportation, which can be a fire hazard. This is not necessary with alkaline batteries.

Household batteries will ONLY be accepted from individual residents – not in large amounts that were collected from schools, businesses, institutions or groups.

Thank you for your cooperation.



MERCURY THERMOMETERS



Mercury exposure poses health risks, especially to young children. Mercury-containing products should be replaced with safer alternatives whenever possible (such as the thermometer to the left which uses gallium instead of mercury). Old thermometers contain up to 700 milligrams of mercury, 140 times more than a compact fluorescent light bulb (CFL).

Since March 2005, SWANCC-area residents have had the opportunity to dispose of mercury-containing thermometers.

The following communities provide drop-off locations for mercury thermometers, wall switches and thermostats at no cost:

Arlington Heights, Evanston, Elk Grove Village, Glencoe, Glenview, Hoffman Estates, Palatine, Park Ridge, South Barrington and Winnetka.

IDs will be checked for proof of residency in any SWANCC member community. Go online at swancc.org for more information and drop-off location details or call (847) 724-9205, ext. 9.

Do not bring batteries, chemical compounds or any other type of waste to this collection program. No business or institutional waste will be accepted!

For more information about the risks of mercury, see the Illinois Environmental Protection Agency's (IEPA) brochure at idph.state.il.us/mercury. Mercury may also be taken to Household Chemical Waste collection sites for disposal; see page 4 for details.

For additional information about permanent and one-day household chemical waste collection sites sponsored by the IEPA or any SWANCC program, visit swancc.org or call (847) 724-9205, ext. 9.

APRIL CALENDAR 2012

April Calendar 2012 Environmental Calendar Is Not Just for Kids

| APRIL ENVIRONMENTAL AWARENESS MONTH 2012 | | | | | | |
|--|--|--|--|---|--|--|
| Sunday | Monday | Tuesday | Wednesday | Thursday | Friday | Saturday |
| 1. Be an EDUCATED GREEN Consumer <i>Greener Choices.org</i> | 2. Use REUSABLES not DISPOSABLES for meals & parties. <i>SWANCC.org</i> | 3. Paper or Plastic? Neither - take your own Cloth bag to the Store. | 4. Sip and Go - use a refillable coffee mug or water bottle. | 5. Set printer for double-sided Copies <i>PrivacyRights.org</i> | 6. Stop Junk Mail <i>EPA.gov</i> <i>EERE.Energy.gov</i> <i>EnergySavers.gov</i> | 7. Use Less Energy <i>EPA.gov</i> <i>EERE.Energy.gov</i> <i>EnergySavers.gov</i> |
| 8. Choose Eco-friendly Cleaning Products <i>Greener Choices.org</i> <i>Household Products in a New Way</i> | 9. Make Crafts From Trash <i>SWANCC.org</i> | 10. DONATE gently used items to Charity <i>post on Freecycle.org</i> | 11. Find unique items to donate <i>CommunityResourceNetwork.org</i> | 12. Give Surplus books and Supplies to Schools <i>SCARCEcoEd.org</i> | 13. Repair items when possible. | 14. Water Conservation Measures Install a Rain Barrel or Garden <i>RainGardenNetwork.com</i> |
| 15. What's in Your Cosmetics? <i>SafeCosmetics.org</i> <i>EWA.org/skindeep</i> | 16. Put Recycling Bins next to Trash Cans. <i>IllinoisRecycles.org</i> | 17. Label Recycling Bins with Acceptable Materials <i>RecycleAcrossAmerica.org</i> | 18. Place Recycling Bins in high traffic areas indoors and outdoors. | 19. Keep Recycling Bins free of contamination <i>SWANCC.org</i> | 20. Do's and Don'ts of recycling <i>Watch the Video at SWANCC.org</i> | 21. Compost at Home! <i>OrganicWaste.com</i> <i>OrganicWaste.com</i> |
| 22. "Natural" Lawn Care Tips - SPCPweb.org <i>SafeLawns.org</i> | 23. EARTH DAY <i>EarthDay.org</i> <i>EarthSite.org</i> | 24. Clean up The World <i>CleanUpTheWorld.org</i> | 25. Environmental Education Week <i>EE Week.org</i> | 26. Walk to School Day <i>Walk to School.org</i> | 27. ARBOR DAY <i>ArborDay.org</i> | 28. Got Old Drugs? DEA's National Take Back Initiative - VISIT <i>REB.org/nationaltakeback.gov</i> FOR DETAILS |
| 29. Provide a HEALTHY HOME! <i>HealthyChild.org</i> <i>MHS.SustainableProducts.com</i> | 30. VISIT SWANCC.org for Programs, Events and Resources | Calendar provided by the Solid Waste Agency of Northern Cook County MEMBERS Arlington Heights Barrington Buffalo Grove Elk Grove Village Evanston Glencoe Glenview Hoffman Estates Inverness Kenilworth Lincolnwood Morton Grove Mount Prospect Niles Palatine Park Ridge Prospect Heights Rolling Meadows Skokie South Barrington Wheeling Wilmette Winnetka | | | | |

More on back ↘ K-Passi

Since 1992, the April Environmental Awareness Calendar has provided daily tips and activities that highlight waste reduction measures. Most offer a website for more information. Adults, be sure to check out the weekend tips that focus on health, home and conservation measures, such as:

- What chemicals are in your makeup
- Ways to save energy and money through simple home improvements
- How to set up a backyard compost bin
- How to care for your lawn without using chemicals
- How to choose safe cleaning products
- Where prescription drugs can be taken for safe disposal, and much more!

Flip it over. The reverse side provides many upcoming Agency programs and resources. For more information or to print the calendar, visit swancc.org.

TRASHY FASHIONS SHOW & PROJECT

Trashy Fashion Show Project Open to Designers of All Ages

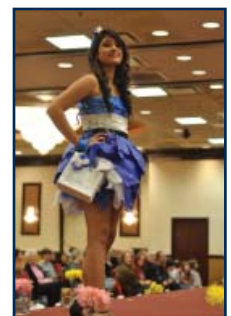
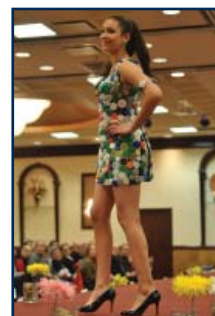
Are you creative? Do you sew, cut, glue or fold? Are you environmentally-minded by using resources a bit longer? Do you live in a SWANCC community? If you answered "yes" to these questions, then you are perfect to be one of SWANCC's 2012 Trashy Fashion Show designers!

Once again, the Agency is sponsoring this community-based project to raise awareness about being resourceful rather than wasteful. Just because we can throw something away doesn't mean that we should. Individuals of any age and gender,

working alone or in small groups are welcome to participate. The project goal is to create an outfit with three accessories using found materials or items that you already have – not to buy supplies. Last year, over 60 designers created 40 outfits for SWANCC's 2011 Trashy Fashion Show that was held in November in Skokie. To view the show or see past photos, visit swancc.org.

The theme this year will focus on unique movie characters! Designers must commit to participating by June 15, 2012, with

outfits and accessories completely finished by September 21, 2012. A panel will review submissions to make sure that criteria have been met, and send out confirmation notices to all designers the week of October 8th. The fashion show is scheduled for mid-November in conjunction with America Recycles Day, nationally-observed since 1997. Workshops will be offered during the summer for participants. To obtain the 2012 Trashy Fashions Project information, criteria and timeline, visit swancc.org or call (847) 724-9205, ext. 204.



FIGHTING FOOD WASTE



The following are eco-friendly ideas to reduce food waste at home.

Be Strategic

Wasted food is wasted money. The best way to cut down on food waste is at the point of purchase. Impulse buys can easily lead to unused food.

Planning ahead takes the guesswork out of what to buy at the store. Decide upon a menu for the week and then make a list of ingredients and stick to it. You will see the amount of food waste decrease dramatically by following this simple step.

Get the most out of your grocery bill by taking advantage of the freezer. Tired of spaghetti leftovers? Many food items

freeze well and allow your purchases to go much further. Also, prepared meals will be available at your fingertips when needed!

Don't Let Waste Consume You

Reducing food waste sounds easier than it actually is in practice. Even the best of efforts to use everything in the kitchen before it spoils cannot combat the hustle and bustle of busy lives. There is a solution for food gone bad and even vegetable trimmings — compost!

Fruit, vegetables, egg shells, coffee grounds, filters, tea bags, cereal, bread, pasta, grains and yard trimmings can all be easily composted.

The following information briefly explains two different ways of composting at home.

For additional sources of information and a more detailed listing of what can and cannot be composted, visit swancc.org.

Outdoor Composting

Composting breaks down food waste into rich soil. It is so rich that it must be diluted with other soil to use in gardens or with house plants. Composting decreases the amount of food waste and creates a useful soil additive. Please be mindful of municipal composting restrictions. Yard trimmings, fruit and vegetables can be composted at home. For details, visit homecompostingmadeeasy.com.

Vermicomposting

Vermicomposting is another way to break down food waste by composting with red wiggler worms. The worms eat lots of fruit and vegetables. This method is beneficial for small spaces and can be accomplished indoors or outdoors; however, in the winter months it must be inside or in a heated area. After about three months some soil will be ready to harvest and may be added to plants or garden soil. For more information, visit chicagohomecomposting.org.

Follow SWANCC!



Join the Facebook Fan Page by searching for **Solid Waste Agency of Northern Cook County**.



Find SWANCC's handle on Twitter at @**SWANCCtweets**.



Watch videos on SWANCC's Channel at youtube.com/SWANCC23.

Broadcast Yourself™

Books, Resources, Etc.

Books for Youth



Grandma's Bag of Tricks: Toad Cottages and Shooting Stars
By Sharon Lovejoy
Age: Grades 4 - 8



Recycling with Arnie and Bing
By Ann Wagner
Age: Elementary

Books for Adults



The Organic Lawn Care Manual
By Paul Tukey



How to Grow a School Garden: A Complete Guide for Parents and Teachers
By Arden Buckler-Sporer and Rachel Kathleen Pringle



The Vegetable Gardener's Book of Building Projects
By the Editors of Storey Publishing

complete list at swancc.org



Please print on recycled paper.